

# CARE HOME

## INTERIORS



### FALKLAND GRANGE CARE HOME

Falkland Grange is a 64-bed care facility in Berkshire, owned by Porthaven Care Homes. Care Home Interiors provided a full interior fit-out for this new build home including interior design, full installation, and the sourcing and manufacture of furnishings. With their expertise in dementia design, Care Home Interiors helped Falkland Grange to secure a prestigious Pinders Design Award in the dementia design category.

PINDERS  
**AWARD**  
WINNER  
2020





## THE BACKGROUND

Care Home Interiors has worked with Porthaven Care Homes for over ten years. Falkland Grange is the sixteenth care home that the team worked on together and is the culmination of everything that both parties have learned through their experience.

## THE BRIEF

Falkland Grange was designed and built from the ground up, therefore creating a blank canvas for Care Home Interiors. The brief was to design, supply, and install interiors throughout the home. Porthaven asked for durable furnishings that were at the forefront of the latest design concepts. They also wanted to ensure comfort and safety throughout the home.

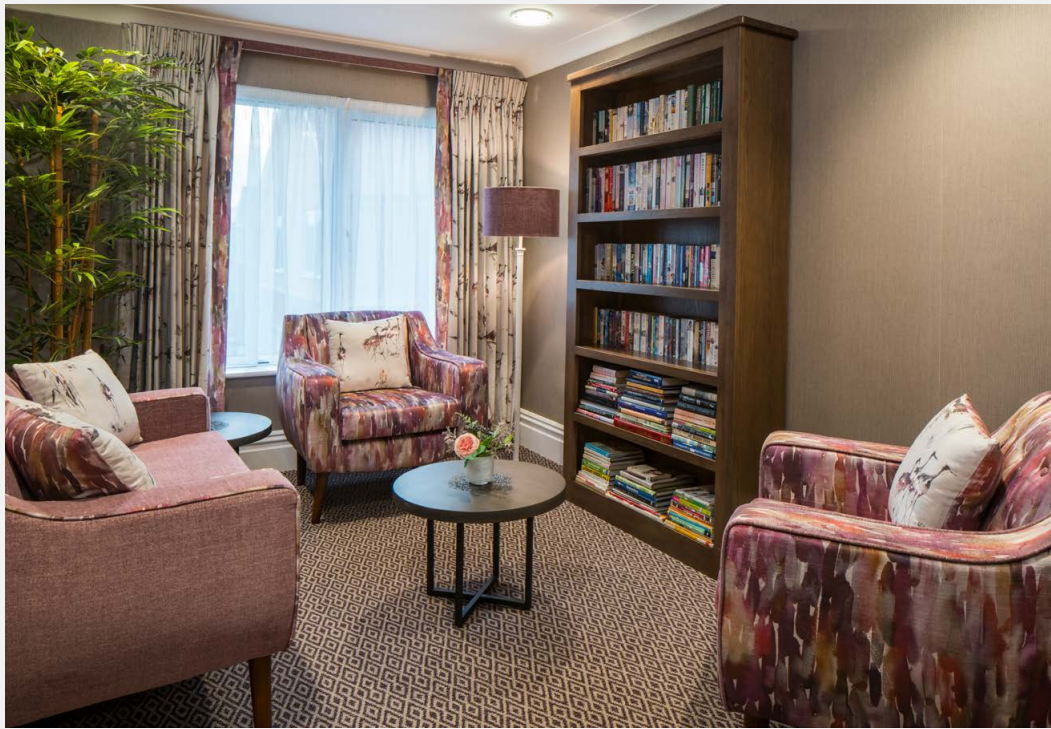
## THE PROCESS

Unlike other interior projects, no scheme boards were produced for Falkland Grange. Instead, the design team collaborated closely with Porthaven's Commercial Director over a two week period, creating schemes for each room before storing them in an in-house design wallet for reference.

## THE RESULT

Each of the 64 bedrooms at Falkland Grange has a unique interior. Every room has a coordinating lamp, chair, curtains, cushions, and headboard in a different design scheme. All members of the team felt that individuals deserved a unique room and that the home should not feel like an institution.





## HANDCRAFTED FURNISHINGS

All the soft furnishings at Falkland Grange were produced in-house by Care Home Interiors. Handcrafted furnishings helped to deliver a superior product while keeping the costs down. The client was able to see their furnishings in production while attending on-site meetings.



PINDERS  
**AWARD**  
WINNER  
2020

“

We are consistently delighted with the results from Care Home Interiors. Their passion for dementia design is evident and it was wonderful that this was recognised by Pinders, the best possible accolade.

SEAN KIME  
PORTHAVEN CARE HOMES

”

## DEMENTIA DESIGN INNOVATION

Falkland Grange is the pinnacle of Care Home Interiors' dementia design innovation to date. From dementia activity stations to intimate dining areas, the home was designed to provide comfort and stimulation for those living with dementia.

## AWARD-WINNING

Falkland Grange was entered into the Pinders Healthcare Design Awards 2020 and won the award for Best Specialist Dementia Design. The judging panel felt that the home was an excellent example of thoughtful and intuitive design for those living with dementia.



## CHECKLIST

Interior design throughout the home.

64 unique bedroom interiors.

In-house manufacture.

Procurement of additional fittings.

Best practice dementia design.

Installation by in-house team.

Delivered on time.

Delivered on budget.

GET IN TOUCH  
AND LET'S HAVE A CHAT  
ABOUT YOUR PROJECTS

Care Home Interiors  
Woodlea Farm  
Station Approach  
Medstead  
Hampshire  
GU34 5EN

-  
[www.carehome-interiors.co.uk](http://www.carehome-interiors.co.uk)  
[info@carehomeinteriors.co.uk](mailto:info@carehomeinteriors.co.uk)  
01420 550000

